

TRANSPORTS ET ENERGIES

par Laurent Cancé Francis

laurencance@free.fr

25/01/2008

ajouts: 16/02/2008

ajouts: 18/02/2008

ajouts: 24/02/2008

ajouts: 29/02/2008

ajouts: 03/04/2008

ajouts: 02/05/2008

ajouts: 10-22/05/2008

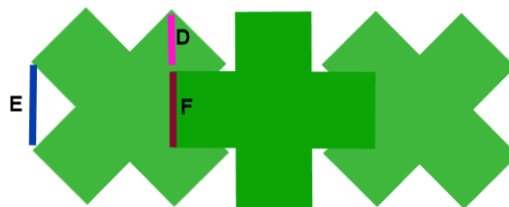
finalisation: 9/04/2009

finalisation: 20/04/2009

english version 13/03/2012

I. Modelisation of atoms

This assumes the topology model of the electron weights quoted in the preceding document. There $\alpha.e-(p)$ the quanta of the electron at a given position and we find three types of interactions: $(-1.\alpha.e, 2.B.e-)$, $(1.\alpha.e-, -2.\alpha.e)$, $(1.\alpha.e-, -1.\alpha.e)$.



Modelisation par une croix des pondérations

ASM is defined as a discrete model of the molecular network in the previous paragraph there interactions D, E, F on.

Def: $i()$ interaction

Prop:

It exists (α, β) where $i(\alpha.e-, \beta.e-) = i(1\alpha.\alpha.e-, 2\alpha.\alpha.e-) = i(1\beta.B.e-, 2\beta.B.e-)$

Def:

The ASM is the topological discretization of weightings identity of the electron. A geometry and ionization spectrum of identity.

Def:

Identity ponderation of electron:

Il existe $P(\alpha) \rightarrow e-$ tel que $e- = \sum P(\alpha_i)e-i$

Def:

The electronic cloud is ASM integration of ASM of modelisation.

Prop:

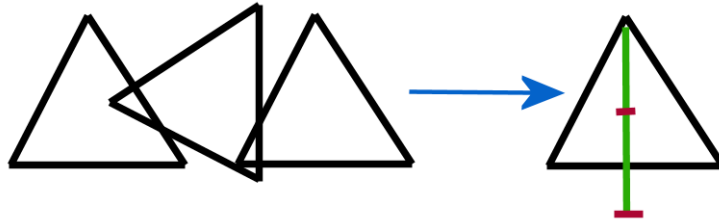
The relative notion to equation of Schrödinger can be demonstrated :

It exists 1 ASM that $t > t_m$, $i_m(ASM)$

=> it exists $A \in \{ASM\}$, $tout ||A|| > ||ASM||$, A defining the predicted state.

Example:

$\alpha=1/3$, Simple atom



Expression of the surfacic discret radiation:

$$\int M \in S(p) ((\cap \delta \alpha(A)) / (||p-M||)) = R_s(p)$$

$$\int M \in V(p) ((\cap \nu \alpha(A)) / (||p-M||)) = R_v(p)$$

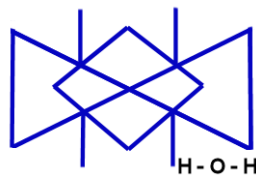
$$R(p) = \langle R_n(p) \rangle$$

Transmutations are so possible.

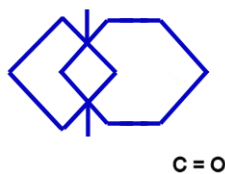
II. Transmutations

First, discuss the modeling of molecules in the form of identity ionization spectrum.

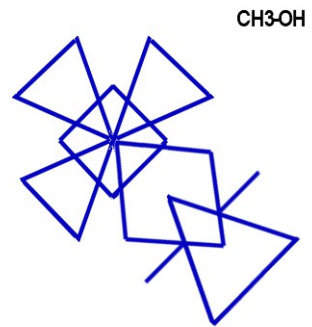
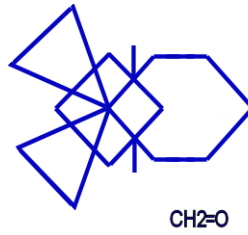
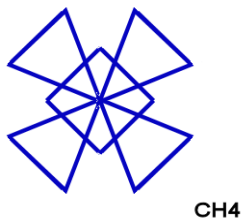
Modeling of the water molecule HOH: O (2-), H (+)



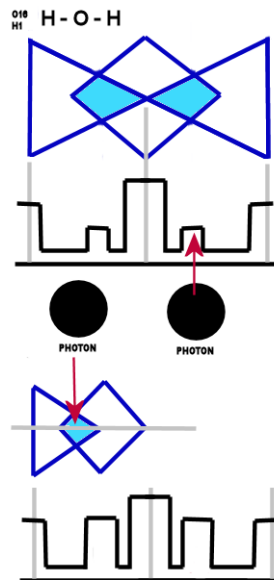
Modelisation of the molecule of carbon monoxide C=O : C(4+)



hydrocarbures:



Application context of wave-particle duality :



Prop:

For all intersection (Int) :

$$V(\text{Int}) = C(\text{Int}) + B(\text{Int})$$

$$B(\text{Int}) = \begin{cases} 0 & \text{si } \epsilon \in \text{TOPO} \\ 1 & \text{si } \epsilon \in [\text{TOPO}] \end{cases}$$

D'où :

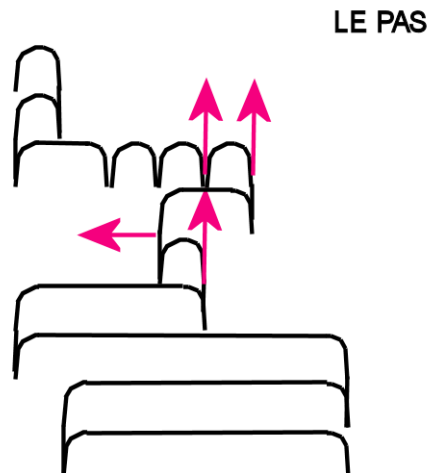
$$\exists [F_z(\text{H}_2\text{O})]^{CO}$$

The principle is the same as life, like worms.

III. La marche

Modeling by the number of nerve impulses psychosomatics, broadcasts and removals related.

Graph not mechanical:



Note that the retro-action brain probably define a permutation tore movals-broadcast frames.

IV. Arm movements

(DUAL)

TO DO -> HANDS -> ARMS -> DIGESTION - (WORM/WATER) - LEGS => TOES pudgy

(suite logique)

The nerves of the thighs being related nerves of the hands and fingers, the nerves of the arms calves and ankles of those shoulders. (supine)

V. Considerations of principle of energy conservation

The problem with the consideration of electricity was to define magnetism as dual instead of defining the time evolution on the matter. Quantum state can be teleported !

VI. Principle de lesser action and maths applications

When considerations of duality wave-corpuscles, it is demonstrable that there is a singularity in the integral models related to generalizations or models resolutions considerations, mainly in the assumptions of DeBroglie.

The postulates of mathematical or physical are demonstrable or false.

You should know however, that the truth table is accurate. The demonstration begins with the tautology $A \Rightarrow A$ according to the model of order that I have determined ...

Concepts related to the previous document defines the resolution of the calculations and verification of the order.

Hence the interest in "most excellent" of my theory V, A, R, Dt

VII. Biological topology

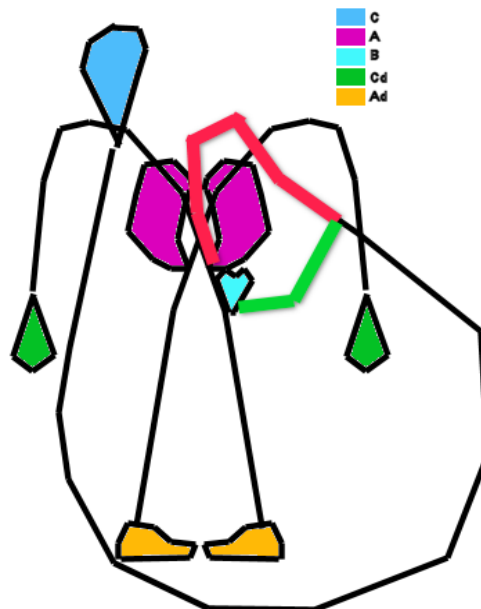
Some versions of applications can be considered in the relativities of distributions. In theory the wave vector electromagnetic, magnetic and pointing are assumed orthogonal. In wave theory, Einstein on the prediction of the gravitational field and the bending of light clearly contradicts this assumption. Thus, we define the relativities the principle of conservation of energy:

APPROXIMATION DES MASSES NERVEUSES



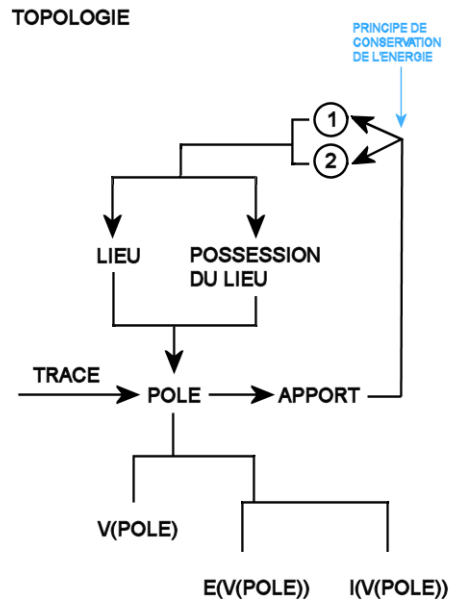
Glossary of symbols of constructions.

Recursivity structure of body :



TOPOLOGIE SANGUINE

La machine (à mouvement perpétuel):



VIII. Enumerations

Precepts of Health:

Mimics the blood.

The monkey stomach.

Bind the hands.

Hygiene is walking.

Primitive laws:

Convince the toes.

Nails grow.

Hair is state.

The owners of hair creation.

completions:

Carry the intestines.

Walking is thought by action.

(the mind does not work unless both hands are tied)

Programming manual of the place is under self-hypnosis.

The democratic state is under self-hypnosis in the following link.

The condition causes uncontrolled self-hypnosis.

Loss of birth is on full ownership of the creation.

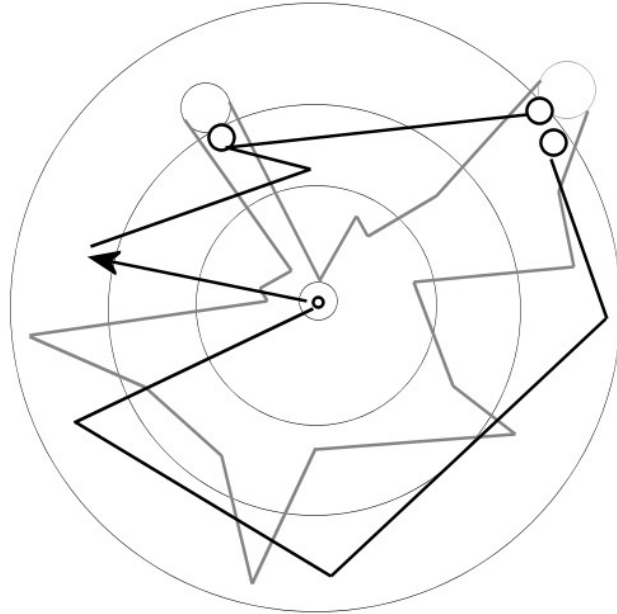
The problem of alienation relating to hypnosis is the creation of dual seemingly of pure energy.

(existence of advertising)

The biological survey, it is deduced that the property is infinitesimally equivalent to self-hypnosis short, where the freedom of action but the lack of control over everything. There are still relativity possessions, energy or matter duality in control over one thing.

IX. Characterisations

The appearance of hearing, to the extent or sound may seem to be seen outside as well characterized. So, perception and another, that to know the origin of sound. The extent of biological topology, the transform of the QPC gives a flash of "pose", so the environmental topology should be dense.



Relativity example of the light relative to the entire composition of the model applied to a set of H₂O molecules in liquid-vapor phase.

The need for developing properties of light measuring the distance, the evaluation of distances in an environment.

For "Camille, The Wire" also, all transmutations are possible, for composition of the time in the making of his work.

I bet most of the good effort away from the QPC, inspections can bediverse and varied

Visualization is correct, but sequencable length, and applied the concepts of relativities can change many repositories. ...

Remember that the dark matter is oriented along an orthogonal chaotic and not random. The energy is simply the vehicle and the most appropriate transport. The set quickly becomes countable!

Matter and energy, but as a duality of superlatives obsolete and lost time, because in its composition, perception is an autonomous meaning and reasoned, and EVERY cube faces have on their properties.

And so the simple actions appear to be "A-Volume-ic" throughout their construction. Some calibration parameters are rather fortuitous but relativities are worthy of the best productions visually and understandably to phase shifts.

X. Applications

1. Generaly

The set of relativities energy / materials being apparently easily countable, it is to consider the medium (vehicle) transport of energy and thus, in principle, the observer, the experimenter and the application.

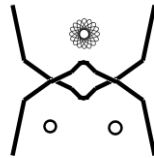
All countable but still contains the mass of physical and informational process. In respect to the variables V, A, R, and Dt, the application of genetics is a specific example of solving the problem and the metaphor of considerations regarding the basic physics and models of good principles. This is, in genetics, to integrate environment. The application is clear.

Dimensional physics issues, including science-fiction, having been approached in ways too simplistic or wacky.

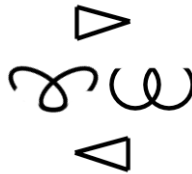
But the theory of transport and energy can be a good idea of the exact problem.

2. Universal coding

From glyph in reading :



Deducting, the universal, bringing une stigmata possession :



3. Magnétisme

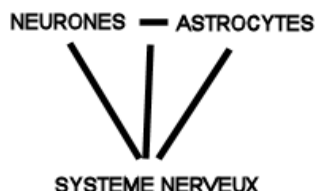
Change the magnetic fields of a global volume alters its temperature because it also comes from collisions with photons, key players in changing fields.

The vertices of field strength are also numbers of applications.

XI. Cerveau

This applies to forms of understandings concerning the processes and shaped in biological characterizations, which we could deduce the mechanical and graphs into force of the machine process. The last graph corresponds to literature writing style or communication protocol (eg Anti-Thesis Thesis Introduction Conclusion Summary), but the biological sense and adapted to changing or species.

In order to consider the connection between each one or two living beings, it is useful to consider the schemes and mechanisms for profiles so automated!



The nervous system is associated with neurons, astrocytes and links between the two.

These connections are coupled with the animal environment and other individuals according to algorithms medium.

From:

N: neurons L: links A: astrocytes SN: nervous system

We build an analogy with V,A,R,Dt of first document.

Phases of sleep are consistent with activation of astrocytes and neurons inertia of digestion, because perception and digestion are among the primary and vital needs.

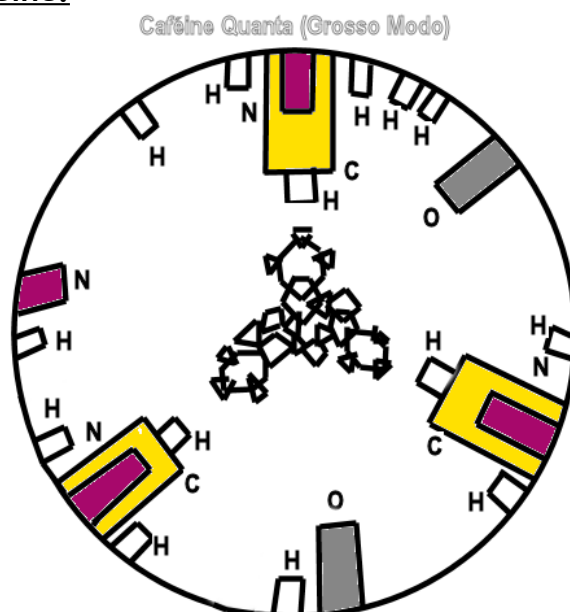
THE BRAIN AS A UNIT OF MEASURE MAP IS ON WHOLE BODY BY ASTROCYTES.

Hence, the inspiration of the animal kingdom and ideas of chammanism.

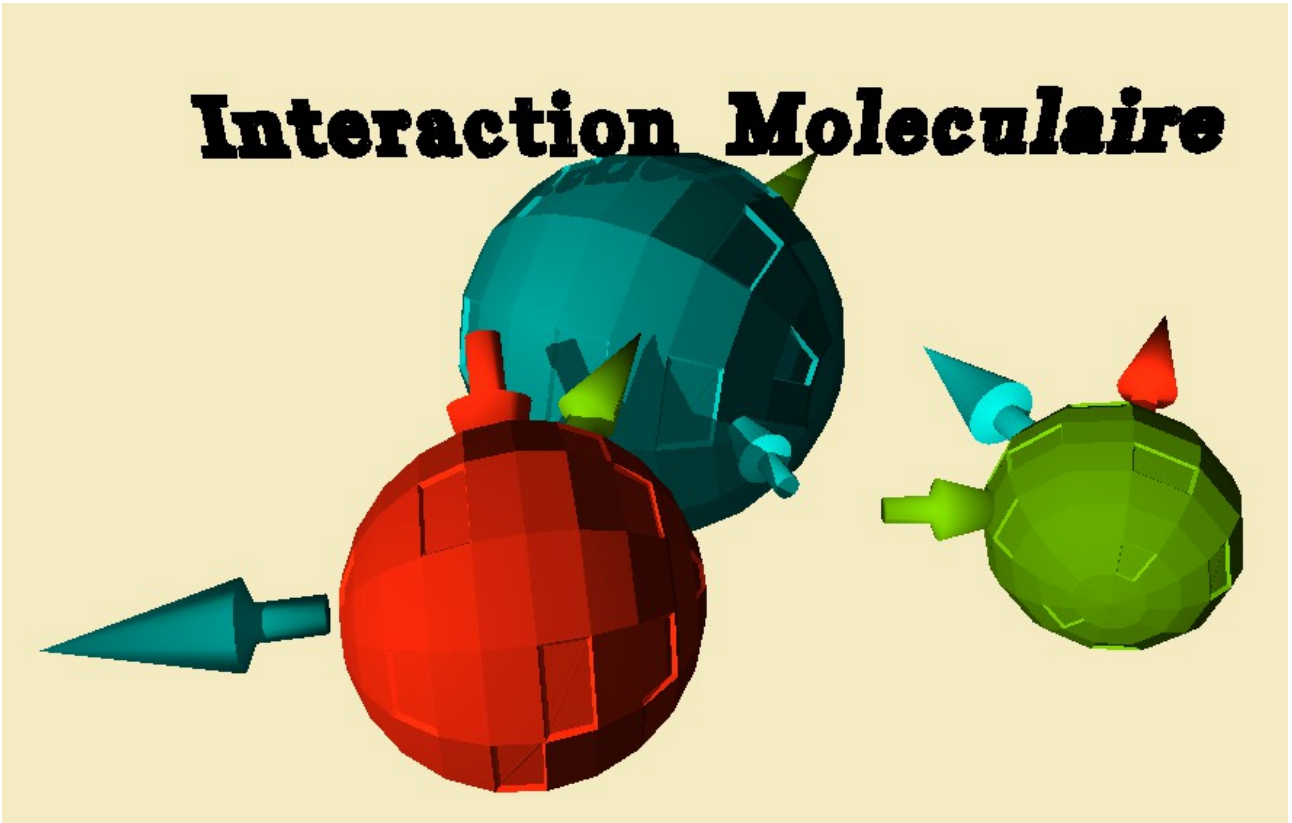
XII. Photons and stigmatas

We have seen that $E = m.c^2 + c.dv$, which means that the energy of a photon can be superior to its mass equivalent to one constant c . To the extent we can alter possessions by the equivalent mass of a photon then we can define the transport of a stigma. This amounts to define a topology on cerebral applications of photon-called thereafter. The stigma created contains much more energy than a particle, which is to explain the fall in energy mass-hitters minds.

XIII. Example of the caffeine.



Interaction Moleculaire



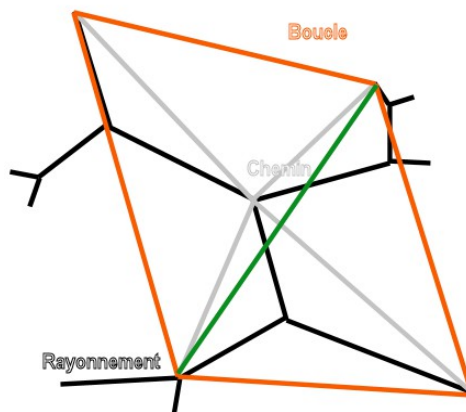
Caffeine oxygen to the brain by defecation.
Hydrogen is used as transport more material / older universe.
Example of a visionary model of molecular interactions by quantum fields.

XIV. Example of methanol.

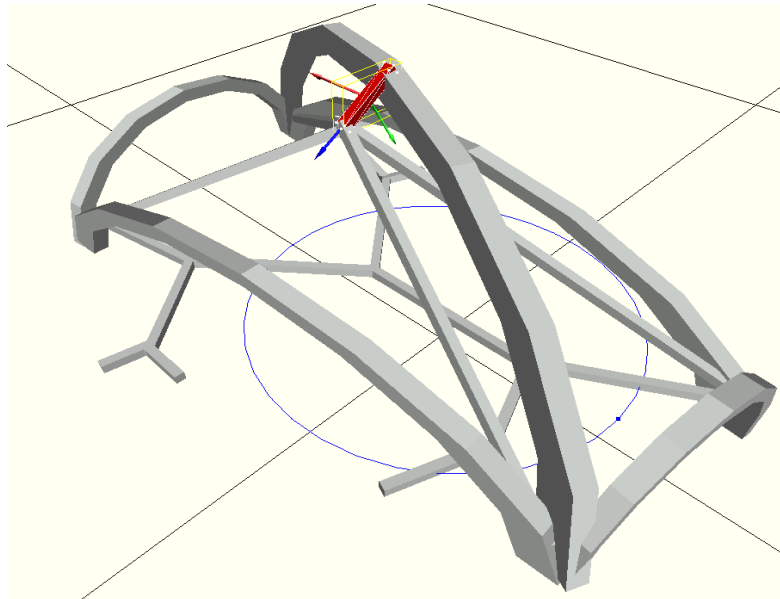
Following the same quantum topological representation of alcohol causes unbalanced bowel movements and blood oxygen with hydrogen. Therefore, the DUI is explained, and activation of natural neurons after evacuation can change state.

XV. The smart time travelling

Exemple d'intégration de rayonnement

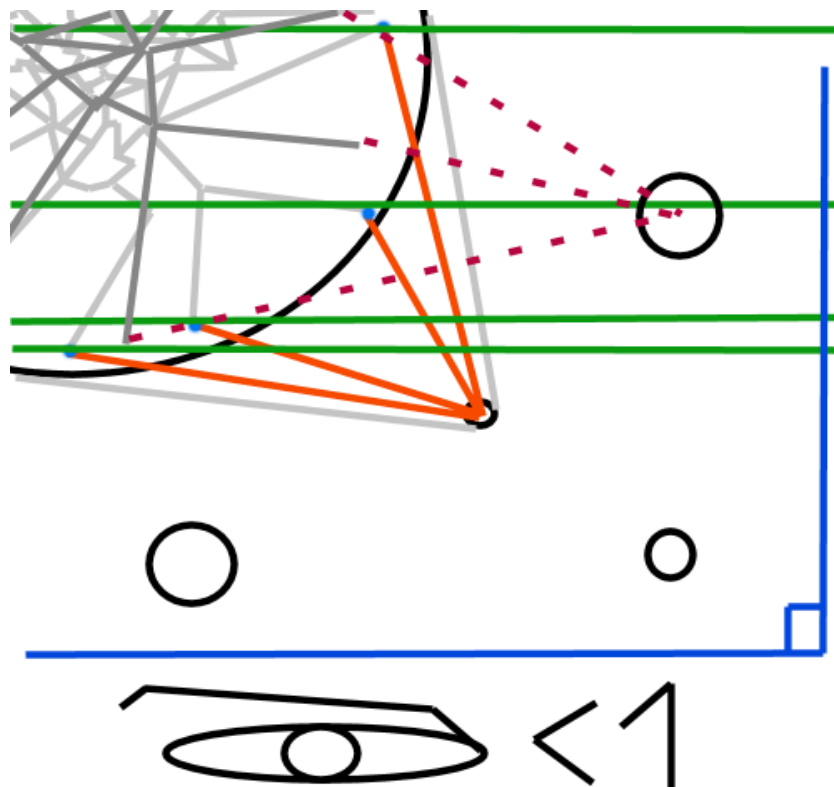


XVI. 3D Representation of time



The integration time gives a singularity assuming photon decay, are everywhere. A measure of radiation can be done in an imprecise way, it is more coarse over the relative mass is important. Armageddon is the integration of the grossest and is not observable in human time, so it is a principle of elasticity related to a full radiation of the radiation. Humans beings are just beginning to think they can invent their own language.

XVII. Geometry of time. Relative topology.

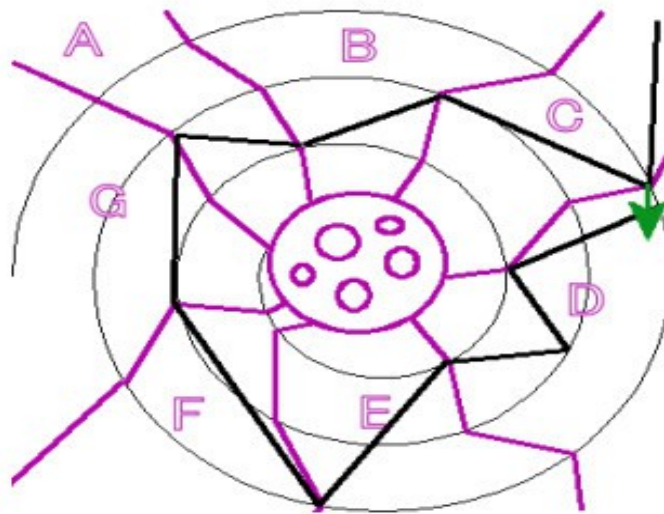


The eye of Horus is the conscience, and tells of old age and mortality of human beings.

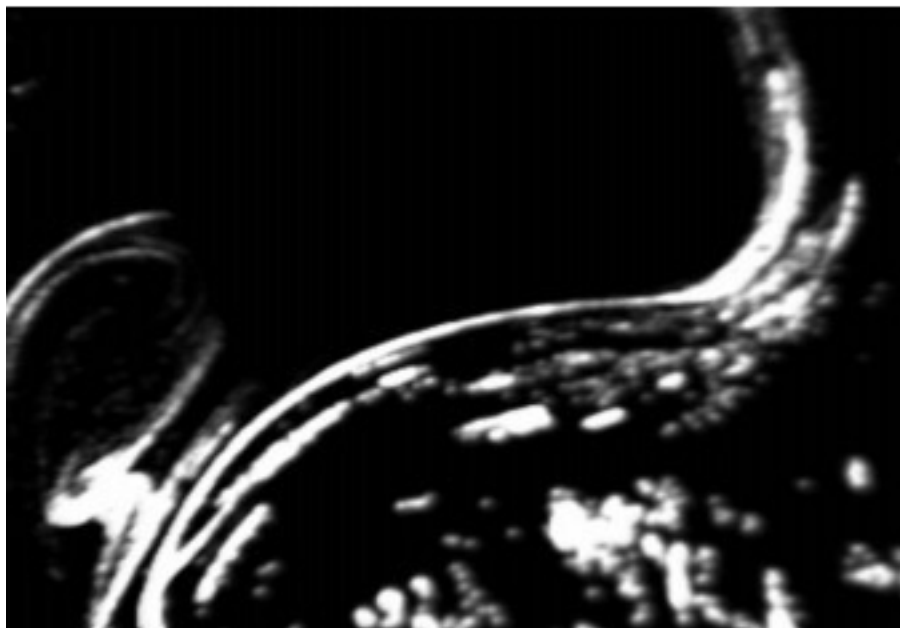
Cats are exclusively terrestrial as possessing the most powerful alchemy that integrate radiation by radiation, ie to create matter, humans possess the arrièremet duplication, dolphins mass distribution of the photons.

Transmutations the black hole within the following integrations arc also depending on the model of the time, except that it is observable radiation at the ends of the black hole according to the cone repeat loopsof radiation. So what is a flattened galaxy is only dependent on the black hole mass, which explains the phenomenon of quasars. The stability of the black hole is related to the presence of time integrations that allow transmuations.

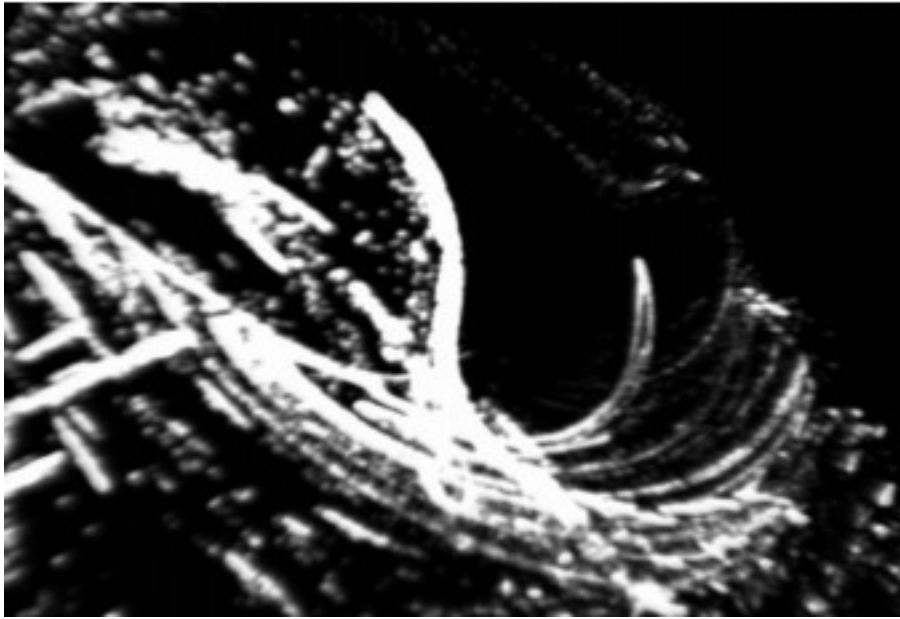
XVIII. Approach of integration of error. Have fun !



Strong Interactions



Single atom.



Polymeres and recursivity.